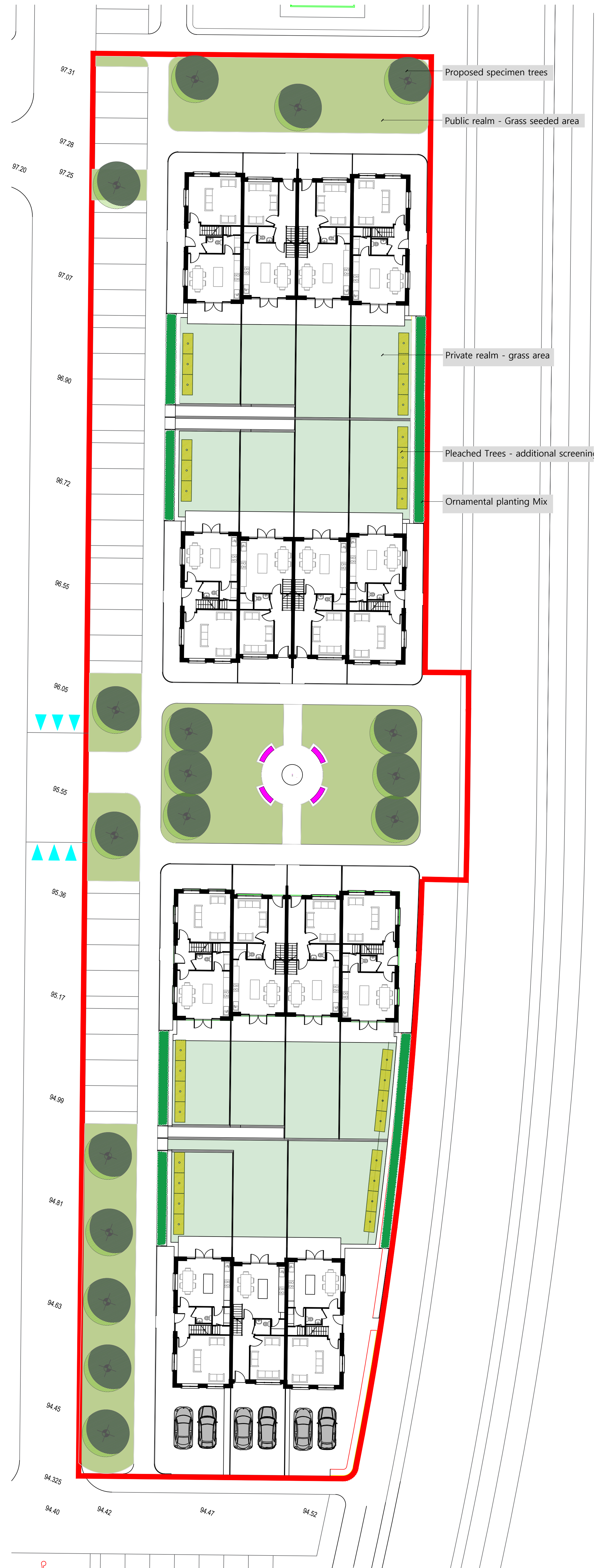



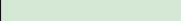



Soft Landscape Plan



Soft Landscape Legend & Specification

-  Public realm - Grass seeded area
-  Private realm - grass area
-  Pleached Trees - additional screening
-  Ornamental planting Mix
-  Proposed specimen trees, public realm.

Tree Planting Specification

All trees shall be planted between the months of Nov and March. The trees shall be purchased from a reputable nursery as rootball specimens and final order to be agreed by Landscape Architect; The trees shall be planted on delivery. If this is not possible due to weather conditions (wet or frosty), the plants must be healed in. All Trees positioned in hard landscaped areas shall be planted using the Strata cell specification with Root barrier please refer to specification sheets.

Maintenance Watering is essential during the first 2 growing seasons regardless of the weather conditions - 1000Lt / Tree/ Month.

Selected Semi-Mature Trees

Specimen varieties	specification	Size	Height	Quantity
Acer Campestre 'Elsrijk'	Pleached	25-30cm	5.0m+	30
Betula pubescenes	Clearstem	12-14cm	4.0m+	3
Carpinus betulus	Clearstem	16-18cm	4.5m+	1
Crataegus prunifolia	Clearstem	16-18cm	4.5m+	2
Fagus sylvatica	Feathered	14-16cm	4.0m+	2
Liquidambar styraciflua	Clearstem	14-16cm	4.0m+	3
Pinus Sylvestris	Clearstem	20-25cm	3.0m+	2
Prunus avium 'Plena'	Clearstem	18-20cm	5.0m+	1
Quercus robur	Clearstem	10-12cm	3.0m+	2
Tilia pallida	Clearstem	16-18cm	5.0m+	1

Methodology and Guidance Notes:

The tree pit should have a diameter at least 100mm greater than that of the root system, with the depth not exceeding the rootball. Any glazed or smeared sides caused by digging shall be scarified with the use of a fork. The tree will be positioned in the centre of the planting pit at the correct depth, taking into account the root flare and finished level. Prior to backfilling the hessian twine/wire cage supporting the rootball shall be loosened or removed. Backfilling shall be carried out in layers of 150mm, ensuring the tree is held upright. At each stage the fill will be carefully firmed in to eliminate air pockets under and around the root system. The final layer of backfill will not be consolidated, but should be of a sufficient depth to allow for settlement and mulching. Formative pruning should be carried out if required, removing dead, damaged, crossing or diseased branches. Refer to Tree planting specification for tree anchoring system. All trees planting operation will be carried in accordance with BS8545:2014 Trees: from nursery to independence in the landscape -Recommendations.

Ornamental Planting List Mix

Species	specification	size	%mix
Bergenia 'Harzkristall'	5/sqmcg	2L	10%
Calimagrostis 'Karl Foerster'	3/sqmcg	3L	10%
Carex 'Evergold'	5/sqmcg	2L	10%
Euonymus 'emerald Gaiety'	5/sqmcg	3L	10%
Hydrangea 'Limelight'	1/sqmcg	10L	10%
Nepeta 'Walkers Low'	5/sqmcg	2L	15%
Pachysandra 'Green Carpet'	5/sqmcg	2L	10%
Penstemon 'Apple Bossom'	5/sqmcg	3L	15%
Pittosporum 'Tom Thumb'	3/sqmcg	5L	10%



Landscape Notes:

All Landscape Works shall be undertaken by ALCI approved Landscape Contractor and in accordance with Landscape specifications. Topsoil to BS 3882:1994, general grade, free from sharp edged stone. Backfilling Materials: A previously prepared thorough mixture of:

- 70% by volume topsoil excavated for the pit and the additional topsoil as required.
- 25% by volume approved well-rotted organic material.
- 5% by volume coarse grained washed river sand.
- 600g/cu m bonemeal of medium fine texture, containing not so less than 20% soluble potash and 3-5% nitrogen.

Maintenance

Initial Landscape operations will be undertaken by ALCI member. All operations will be carried out to a standard specification. The contractor will be responsible for plant establishment for 18 months of establishment maintenance. Any trees and shrubs dying, damaged or removed shall be replaced in the following planting season with plant of similar size and species.

NOTES: Landscape plans Copyright Reserved. Do Not Scale drawing. Use Figured Dimensions Only. All Discrepancies to be Reported to JaneMcCorkell Landscape Architect	 Registered Landscape Architect 2024-25	JANE MCCORKELL DESIGN	Ashbourne, Co. Meath. Ph: 087 6839520 Email: jane@janemccorkell.com	Rev.	Date.	Note.		Document no:	PP216 - 2025 - 01		Project code:	levels & location	sequence number:	000001	STATUS CODE
								Project title:	Grange End, Dunshaughlin	DRAWN BY: JMC	Organisation code:	Document code:	Revision:	00	JMC REF NO:
								Drawing title:	Soft Landscape Schedule	SCALE: 1:200@ A1	Department code:	Roles code:	Stage:	Planning	
								Client:	Loughlynn Developments Ltd.	DATE: Feb 2025	This drawing is the copyright of Jane McCorkell Landscape & Garden Design and has been produced for the client and project as stated above. The drawing and all information contained herein, including the written consent of Jane McCorkell Landscape & Garden Design, is hereby acknowledged by any measurements made by other persons.				